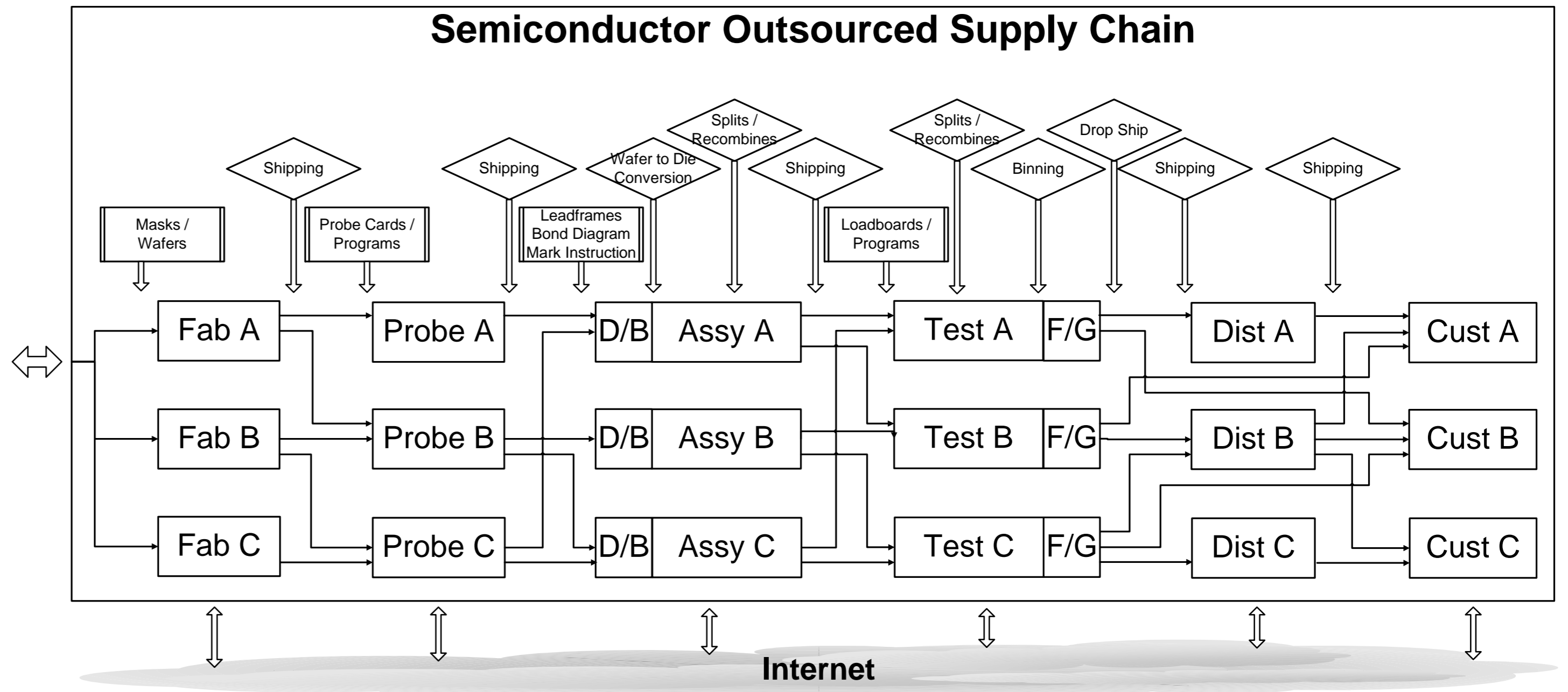
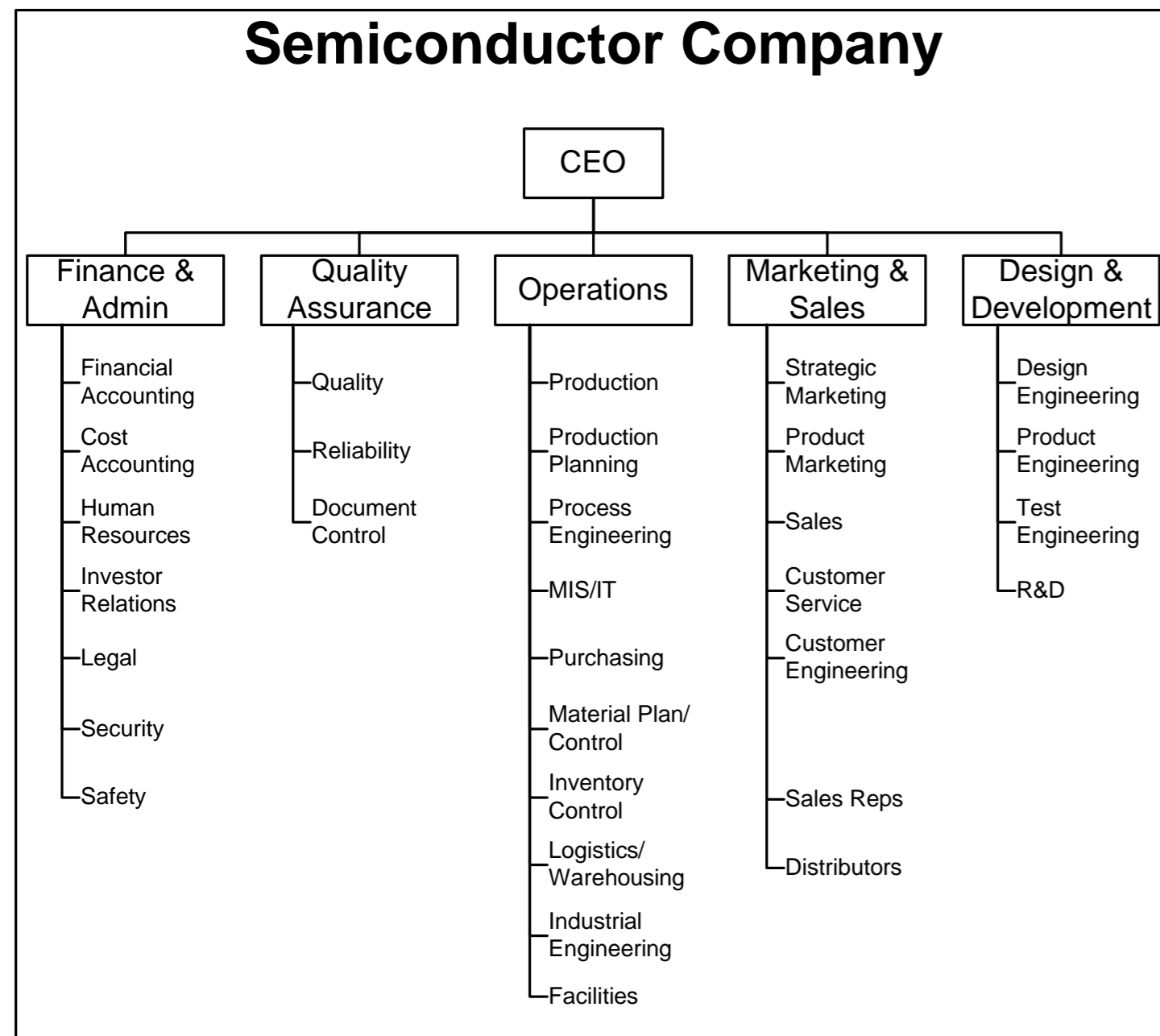
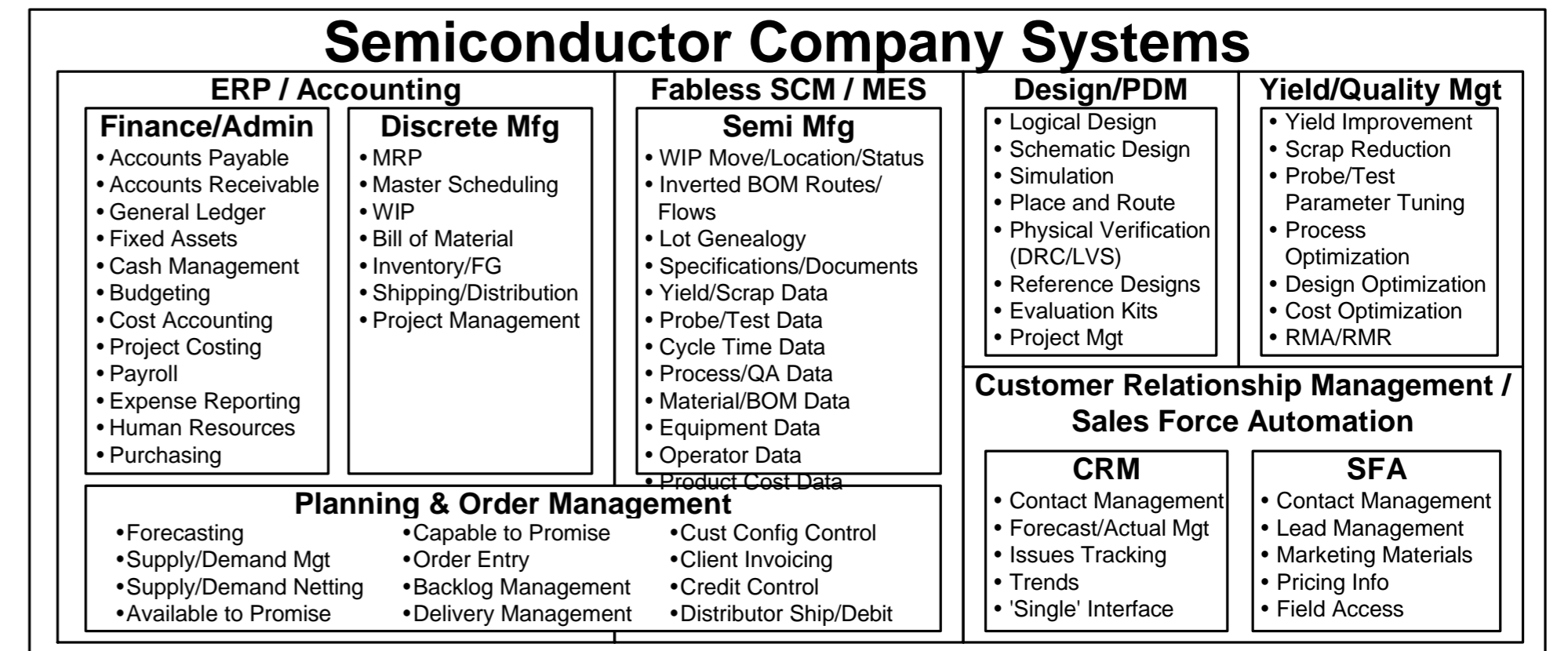


# SEMICONDUCTOR SUPPLY CHAIN



- ### Typical Semiconductor Company Functions / Issues
- |   |  |   |  |  |
|---|--|---|--|--|
| <ul style="list-style-type: none"> <li>Accounts Payable</li> <li>Accounts Receivable</li> <li>AVL/AML</li> <li>Assembly Mark Instructions</li> <li>Available to Promise (ATP)</li> <li>Bar Coding</li> <li>Binning/Bin Data</li> <li>Bill of Material</li> <li>Budgeting</li> <li>Build Instructions</li> <li>Business Processes</li> <li>CARs</li> <li>Commissions</li> <li>Committed Delivery Dates</li> <li>Communication - Subs/Customers</li> <li>Concurrent Design/Engineering</li> <li>Consigned Equipment</li> <li>Contract Negotiation</li> <li>Costing - Product</li> </ul> | <ul style="list-style-type: none"> <li>Costing - Project</li> <li>Critical Issues</li> <li>CRM/Customer Data</li> <li>Customer Design-In</li> <li>Customer Specs</li> <li>Cyclotime - Planned/Actual</li> <li>Data Warehouse</li> <li>Die Bank</li> <li>Discrete/Module Production</li> <li>Distributor Ship &amp; Debit</li> <li>Document Control</li> <li>Drawings</li> <li>Drop Ship</li> <li>ECNs</li> <li>EDI</li> <li>Engineering Data</li> <li>Equipment/Equipment Data</li> <li>Facilities</li> <li>Fixed Assets</li> <li>Flows</li> <li>Forecasting/Planning</li> </ul> | <ul style="list-style-type: none"> <li>Forecast Metrics</li> <li>Global Web Access</li> <li>Lot Holds &amp; Dispositions</li> <li>Intellectual Property</li> <li>Inverted Bill of Materials</li> <li>ISO 9000/QS 9000</li> <li>Knowledge Management</li> <li>Design Libraries</li> <li>Load Boards</li> <li>Logistics</li> <li>Lot Genealogy/Traceability</li> <li>Mask Sets</li> <li>Materials - Direct/Indirect</li> <li>Maverick Lots</li> <li>Multiple Packages for Same Die</li> <li>Multiple Routings</li> <li>Networks</li> <li>New Product Introduction Management</li> <li>On-Time Delivery (OTD)</li> </ul> | <ul style="list-style-type: none"> <li>Order Management</li> <li>Pack Instructions</li> <li>Payroll</li> <li>PCM Testing Specs</li> <li>PDM Data</li> <li>Personnel</li> <li>Pick/Pack</li> <li>Probe Cards</li> <li>Procurement</li> <li>Product Qualification</li> <li>Production Data</li> <li>Project Management</li> <li>Purchase Orders &amp; Requisitions</li> <li>Purchasing</li> <li>Quality Data</li> <li>Resource Management</li> <li>Revenue &amp; Profit Analysis</li> <li>RMR's/RMA's</li> <li>SAC Qualification</li> <li>Sales</li> </ul> | <ul style="list-style-type: none"> <li>Samples/Engineering Lots</li> <li>Service Metrics</li> <li>Ship Alerts</li> <li>SPC/Cpk Data</li> <li>Specifications</li> <li>Splits/Recombines/Bonuses</li> <li>Supplies</li> <li>Supply Chain Management</li> <li>Tape Out</li> <li>Test Mark Instructions</li> <li>Test Programs</li> <li>Training</li> <li>Tubes/Trays/Tape &amp; Reel</li> <li>Vendor Agreements</li> <li>Vendor Managed Inventory</li> <li>Vendor Selection</li> <li>WIP Data/Status</li> <li>Workflow Management</li> <li>Yield Loss Data</li> <li>Yield Mgt - Planned / Actual</li> </ul> |
|---|--|---|--|--|



## N-ABLE GROUP INTERNATIONAL

Excellence In Semiconductor Consulting & Recruiting

Operational & Supply Chain Optimization · Executive & Professional Recruiting · Management Systems Consulting · Investment & Acquisition Advisement

www.n-ablegroup.com

Copyright © 2003 by N-Able Group International